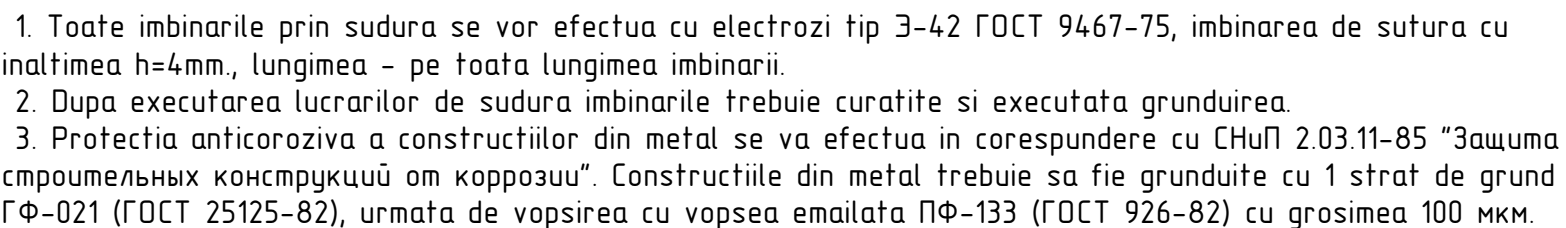
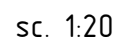
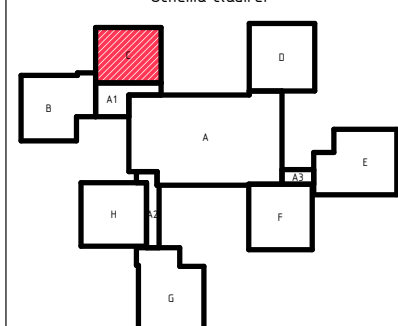
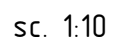
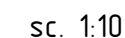
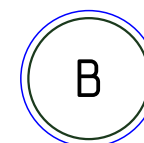
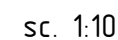


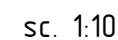
## 1



## sc. 1:50



Marcarea



Pozitia	Denumirea	buc.	Massa un. kg.	Nota
	Scara de acces pe acoperis Sma-2	1		
1*	—120x5 GOST 103-76, l=200	6	0,94	5,64 kg
2	└ 75x5 GOST 8509-86, l=700	6	3,30	19,80 kg
3	Ancora M22 GOST 28778-90, l=250mm	12	0,7406	8,89 kg
4	└ 50x5 GOST 8509-86, l=6200	2	23,37	46,74 kg
5	Ø20A-I ГОСТ 5781-82, l=700	10	1,73	17,30 kg
6	└ 50x5 GOST 8509-86, l=700	2	2,64	5,28 kg
7	└ 50x5 GOST 8509-86, l=950	2	3,58	7,16 kg
8	Ø10A-I ГОСТ 5781-82, l=700	16	0,43	6,88 kg
9*	└ 50x5 GOST 8509-86, l=1500	2	5,66	11,32 kg
10	Surub pentru lemn cu cap hexagonal M10 Ø6, l=120	10	-	LIDER

2020	28.07-D/20-SAC			Reparatia capitala a acoperisului scolii primare nr. 21 "S. Vangheli" din str. Tudor Vladimirescu 16				
A.S.P	Mihaila V.		07.20	Scoala primara		faza	plansa	planse
I.S.P	Hihlat Em.		07.20	Bloc C		PE	108	
Elaborat	Mihaila V.		07.20	Scara Sma-2. Sectiunea 1-1,...,c-c. Nodul A, B. Specificatia materialelor		"GEO-CAD-PROIECT" mun. Balti		